

Lecture on Task 1 in Academic Module (For Academic Training Only)

一、圖表的幾種常見形式

1. curve graph; 2, bar char; 3, pie chart; 4, table; 5, sequence of events; 6, a picture of an object showing how it works. 目前僅考 1, 2, 3, 4。

二、圖表描述應注意的問題:

1. 要突出重點,抓住圖表中的極端點。如:最大或最小、最多或最少、最好和最差。
2. 總趨勢的描述必須準確,要看出總的規律、趨勢,抓住特徵。
3. 圖表往往提供大量資料,考生應該仔細觀察分析,從中選擇有效資訊,圖表上資料、數據的描述必須選擇重點,不能事無巨細,一一列出。
5. 充分利用圖表中提供的文字或說明。同樣,圖表中沒有的資訊不能憑主觀任意捏造。
6. 說明、描述圖表時應該注意動詞時態,屬於過去發生的應該用一般過去時,屬於經常發生的應該用一般現在時。
8. 句子結構要力求有變化、不要總是一個句型。
9. 考生應該熟練掌握一些固定句型和表達方式。
10. 拼圖比較形象、直觀,常用來表示總體與部分、部分與部分之間的比例關係,一般以百分比的數位呈現。
12. 曲線圖一般說明變數之間的發展過程和趨勢。
13. 表格提供大量資料,應認真分析表格中各資料之間的內在聯繫,發現各項目的變化規律。
14. 柱狀圖主要通過柱狀的高度表示同一專案在不同時間的量,或同一時間不同專案的量。
15. 認真檢查。常見錯誤有 1, 主謂一致, 2, 時態, 3, 介詞。

三、常用句型和辭彙

1. The table/chart shows
Diagram describe
Graph illustrate
Figures demonstrate
Statistics depict
Reveal
2. 導入式句型
According to the table/chart
As (is) shown in the diagram
As can be seen from the graph
It can be seen from the figures
We can see from the table/chart
It is clear/apparent from the diagram
3. The number of (cars) increased suddenly from (June) to (December)
Jumped rapidly
Rise/rose dramatically between (June) and (December)
Ascend significantly
Decreased sharply
Dropped steeply
Fall/fell steadily
Descend slowly
Fluctuated gradually
Rebound slightly

4. There was a (very) sudden increase
 - Rapid jump
 - Dramatic rise
 - Significant ascent
 - Sharp decrease in the number of (cars) from...to
 - Steep drop
 - Steady fall
 - Gradual descent
 - Slow fluctuation
 - Slight rebound

四、比較級結構

1. More...than
2. As...as
3. Times + the height/length/width of....
4. Amount to/reach/arrive at
5. Account for

五：標準化結構：(此部分僅供參考)

Para 1, 兩句話：第一句：This is a _____ chart, which demonstrates the number of _____ from _____ to _____. 如果兩個圖，則：There are two charts below. The _____ chart describes the number of _____, and the _____ chart illustrates the figure of _____. 第二句：(所有題目適用), From the chart we can see that the number of _____ varies constantly/greatly in _____.

Para 2, As we can see from the chart, /or It is clear from the chart that _____. 如果有兩個圖：則：The _____ chart shows that _____. /or As we can see from the first chart, _____

Para 3, (如果兩個圖的話,) It is clear from the second chart that ...

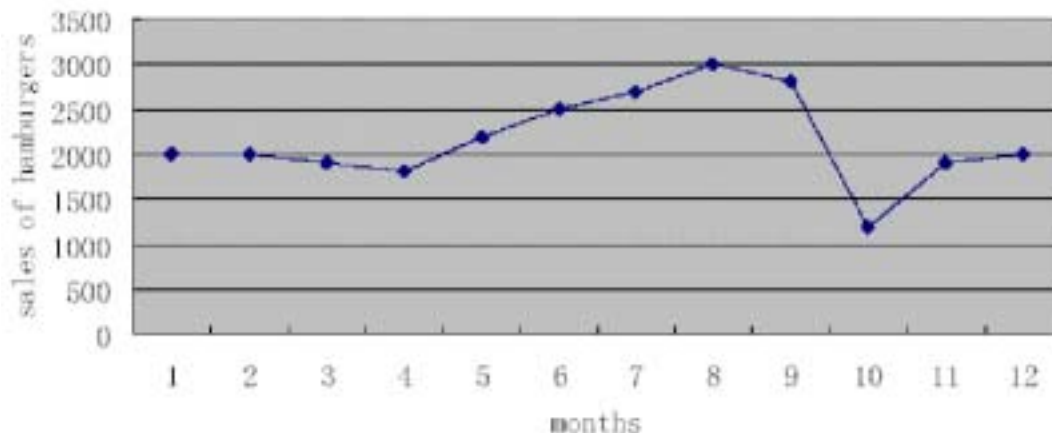
Para 4, 結尾：From the figures/statistics above, we can see/conclude/draw a conclusion that ...

六、 Sample test

Sample 1

The graph below shows Harry's sales of Hamburgers in 1998. Write a report to a university lecturer conveying the information in this chart. You should write at least 150 words.

sales of hamburgers in Harry's in 1998



This graph demonstrates the figures of sales of hamburgers in Harry's in 1998. As we can see from the chart, the sales changed greatly throughout the year.

As is shown in the graph, the sales of hamburgers in Jan, Feb. and March kept almost unchanged, around 2,000 each month, in spite of a slight decrease in April and May, when about 1800 were sold each month. From June on, there appeared a steady rise of sales, which amounted to 2600 in July and 3000 in August, the highest point during in the whole year. Then after August, the figure fell down steeply and bottomed out in October, arriving at 1200, despite a small rebound in November and December, which was 1900 and 2000 respectively.

From the statistics shown in the graph, we can see that the sales were the highest in August in Harry's and the lowest in October in the year 1998. (153 words) (請注意黑體部分的模仿)

Sample 2

The two charts below demonstrate the survival rate of females who have cancer. Write a report to a university lecturer. You should write at least 150 words.

Chart1
females who have alimentary cancer

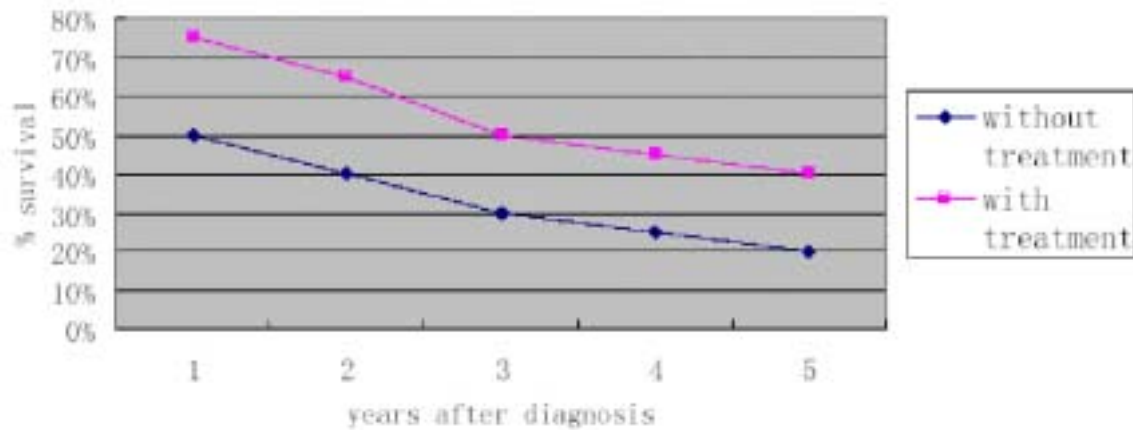
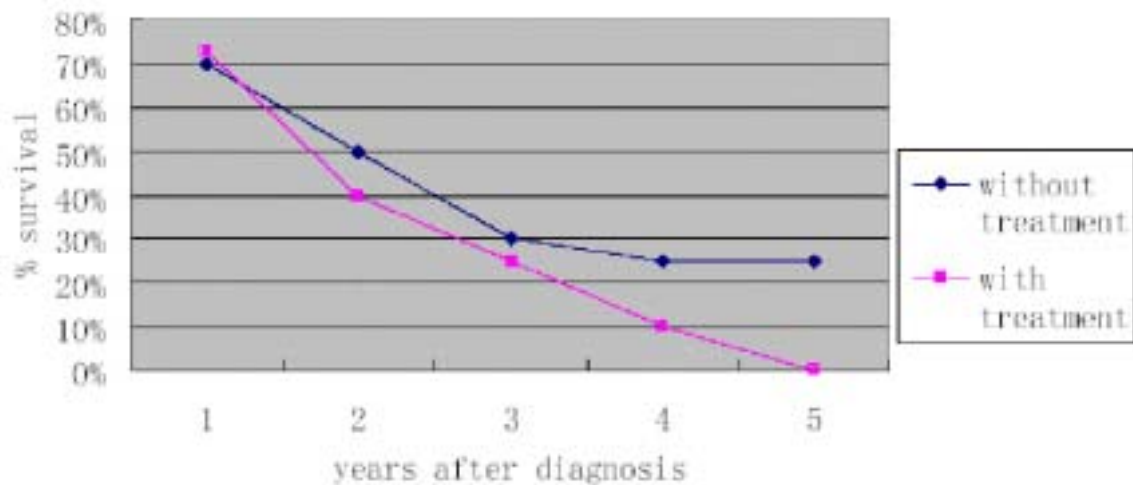


Chart2
females who have larcosacoma



(範文)

The graphs below demonstrate the effect of treatment of alimentary tract cancer and lymph sarcoma cancer in females.

We can see from the first graph that the surviving rate of people who have alimentary tract cancer with out treatment is 40 percent one year after diagnosis. With time passing by, the surviving rate falls down steadily to 20 percent five years after diagnosis. However, the surviving rate of the patients with treatment is 75 per cent one year after diagnosis and 50 per cent five years later.

The second graph illustrates that the surviving rate of people who have lymphosarcoma cancer is about 35 per cent one year after diagnosis, whether they are treated or not. Nevertheless, we can notice the fact that the surviving rate of the lymphosarcoma patients without treatment is 25 per cent five years after diagnosis while the surviving rate of those with treatment is nearly zero.

We can conclude from the statistics above that treatment to alimentary tract cancer is very effective, which enhances the surviving rate of people infected with alimentary cancer, while the treatment to lymph sarcoma cancer is ineffective, and in some sense, has negative effect. (191 words)

(範文)

The two graphs show the situation with and without treatment for two types of cancer in women cancer of the alimentary tract and lymph sarcoma. Without treatment, the life expectancy for both types of cancer is poor-fewer than 25 % of patients survive for five years after diagnosis.

For cancer of the alimentary tract, treatment can be reasonably effective. Whereas only 35 -40 % of patients survive one year after diagnosis without treatment, when treatment is applied about 75 % of patients survive one year, and the survival rate after five years is just under 50 %.

For lymph sarcoma, however, treatment can literally be fatal. The survival rate one year after diagnosis is around 50 %, whether treatment is applied or not. However, treatment is shown to have a very negative effect beyond one year. After five years 25 % of untreated patients are still alive, whereas none of the cases studied who received treatment survived five years after diagnosis.

(162 words)